



AMERICAN CONCRETE PUMPING ASSOCIATION



A CAREER IN
**CONCRETE
PUMPING**

DUTIES & RESPONSIBILITIES OF CONCRETE PUMP OPERATORS

A CAREER IN CONCRETE PUMPING

A concrete pump operator is a skilled machine operator typically working on construction job sites. As opposed to a crane operator, who may go to one job site for six months or a year, a pump operator typically goes to one or even two different job sites per day. Duties include controlling the operation of the pump and the output of concrete by directing the boom. They are also responsible for getting the machine to and from the job site and making sure the pump is ready for the next job. As one recently interviewed operator put it: "They give me a giant machine with 400 horses that makes a lot of noise—what's not to love?"

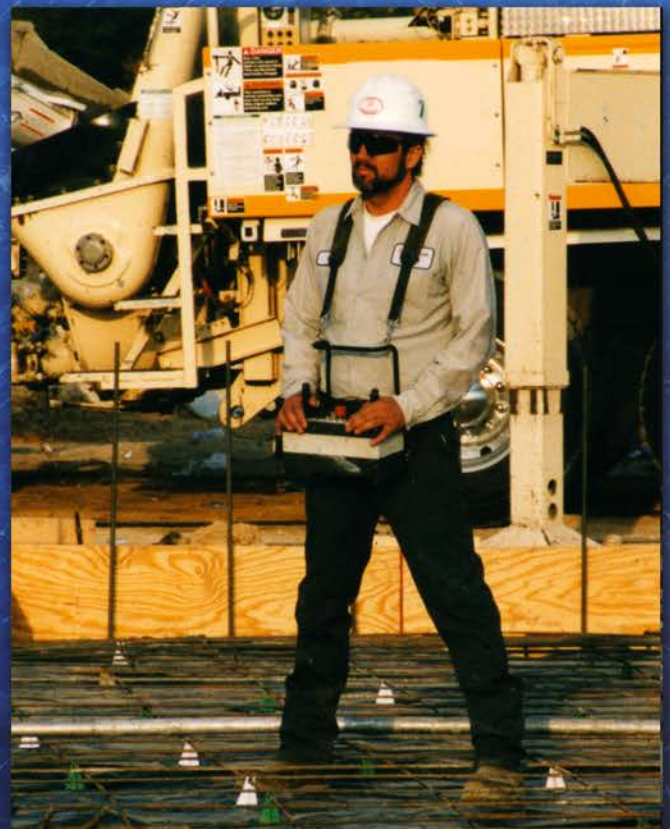
REWARDS

- Competitive compensation
- Opportunities for advancement
- Long-term employment
- Benefits from some companies such as: health care; retirement and life insurance
- Ability to locate or relocate easily

Pump operators are some of the most highly paid construction workers anywhere. Some companies are union; some are not.

QUALIFICATION REQUIREMENTS

To perform this job successfully, an individual must be willing to learn and comprehend the operation of a concrete pump as well as some basic mechanics that may be involved in order to keep the pump in good working condition. An operator must also have good customer-relation skills and the ability to problem solve under pressure.



CHARACTERISTICS OF A SUCCESSFUL PUMP OPERATOR

Pump operators come in all sizes and shapes; there is no one type of operator. The best ones, though, are calm and thoughtful as opposed to nervous and excitable. They like to work outdoors and have infinite variety in their workdays. They're easy to get along with, and conscious of the effects their actions have on other workers. Physical requirements are: normal vision and hearing, and the ability to lift and carry pipes and clamps. Some mechanical aptitude is very helpful, but you're not a mechanic. Common sense is more important than book learning, and a positive attitude carries a lot of weight.



ESSENTIAL DUTIES AND RESPONSIBILITIES

- Drive the pump in a safe and conscientious manner to the job site and back to the yard.
- Operate the pump in a safe and conscientious manner, set up system, and clean out the pump after the job.
- Light repair of pumps: Some maintenance is required. Know pump well enough to recognize problems and report them.
- Customer relations: Represent the Company through efficient work and courteous service.
- Keep pump clean: Keep pump washed and free of concrete and grease. Keep system free of concrete.
- Yard: Return system after use to appropriate location in yard. Keep yard neat and orderly.
- Paperwork: Complete and submit pump inspection forms. Complete and submit pump maintenance forms. Keep an accurate timecard of time worked.



PHYSICAL DEMANDS

- Must be able to meet DOT requirements for hearing and seeing.
- Must be able to verbally communicate to others.
- Good manual dexterity to climb on and around the pump in all weather conditions common to the area of the country.
- Must be able to lift up to 75 pounds to overhead position.
- Must be able to push and pull up to 50 pounds.
- Must have the balance and dexterity to maneuver around a construction site, and must enjoy working outdoors in all weather conditions.
- Must be drug and alcohol free.

Right now there is a huge need for operators in almost all areas of the country - pick where you want to live, then visit www.concretepumpers.com to view the online member directory or Career Center to talk to companies in that area.



VISIT THE ACPA CAREER CENTER TO VIEW OPEN JOB POSITIONS OR TO POST YOUR RESUME AT WWW.CONCRETEPUMPERS.COM/CAREER-CENTER

SUPPORTED BY: